



Sink FM Marine

Tank on the right

Kitchen Sinks

Code: 1971 961



DETAILS

Edge/Installation Type	Standard (8 mm Edge)
Finish	Foster brushed
Material	Stainless steel AISI 316
Texture	Foster brushed
Base	45 cm
Dimensions	860x500 mm
Standard fittings	Fixing hooks, gasket, drain, overflow and siphon, boxed packing
Mixer holes	1 standard hole - 2nd hole on request
Built-in hole	840 x 480 mm

Drainer	Yes
---------	-----

Width	86 cm
-------	-------

Bowl dimension	362,5x400mm
----------------	-------------

Number of bowls	1 bowl
-----------------	--------

Waste fitting	3,5" drain
---------------	------------

## FEATURES

2nd / 3rd hole available	The sink can be customized with the execution on request of additional holes, usable for double-hole mixers, for remote controlled drains or for the installation of soap dispensers. The positions are marked on the drawings with dotted line holes.
--------------------------	--

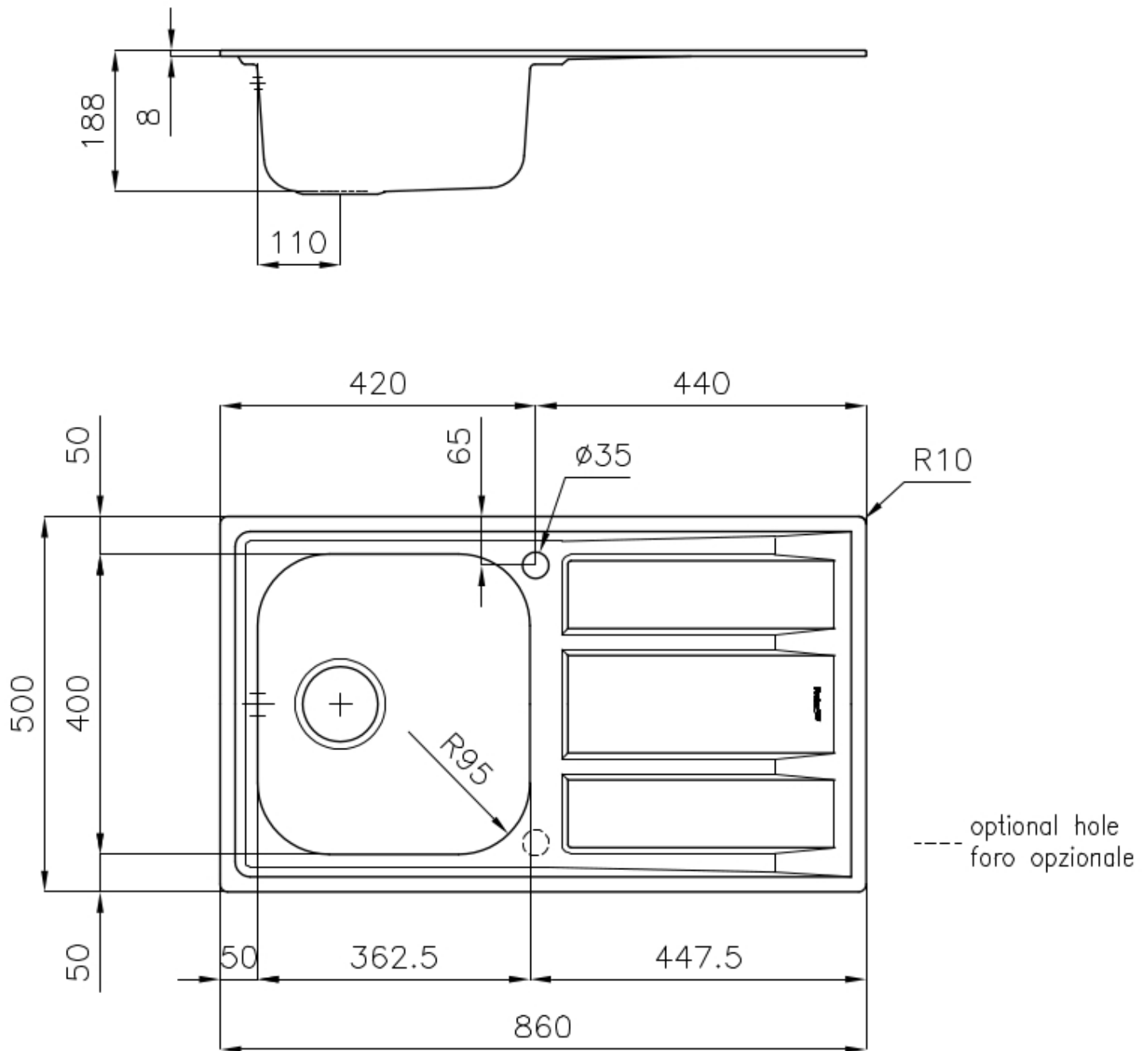
Added value	Foster uses steel thicknesses higher than those used on average by other manufacturers. This is how, thanks to our long experience, we know how to make sinks of superior quality and with a better resistance to aging.
-------------	--

Basket 3,5" waste fitting	The drain is equipped with a large 3.5" drain, with the practical basket cap that prevents the discharge of solid parts.
---------------------------	--

Marine stainless steel	The Marine collection of sinks and hobs uses AISI 316 stainless steel, a superior quality material and widely used in the marine industry, which guarantees the best resistance to the corrosive effects of acids contained in food, salt and detergents.
------------------------	---

Sliding brackets	
------------------	--

## TECHNICAL DATA



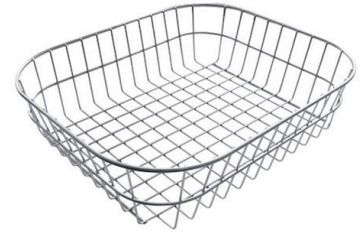
## OPTIONAL ACCESSORIES



**Glass chopping board**  
8631 300



**HDPE Chopping board**  
8657 001



**Stainless steel basket**  
8611 000

## RECOMMENDED PAIRINGS



**Miscelatore Gamma 3 vie - satinato**  
8496 100



**Mixer Tap Lorenzo**  
8466 000



**Mixer Tap NYC**  
8486 000

## OPTIONAL AUTOMATIC WASTE FITTINGS



**Automatic waste fitting**  
8407 100



**Automatic waste fitting**  
8407 000



**LIRA automatic waste fitting**  
8407 103